

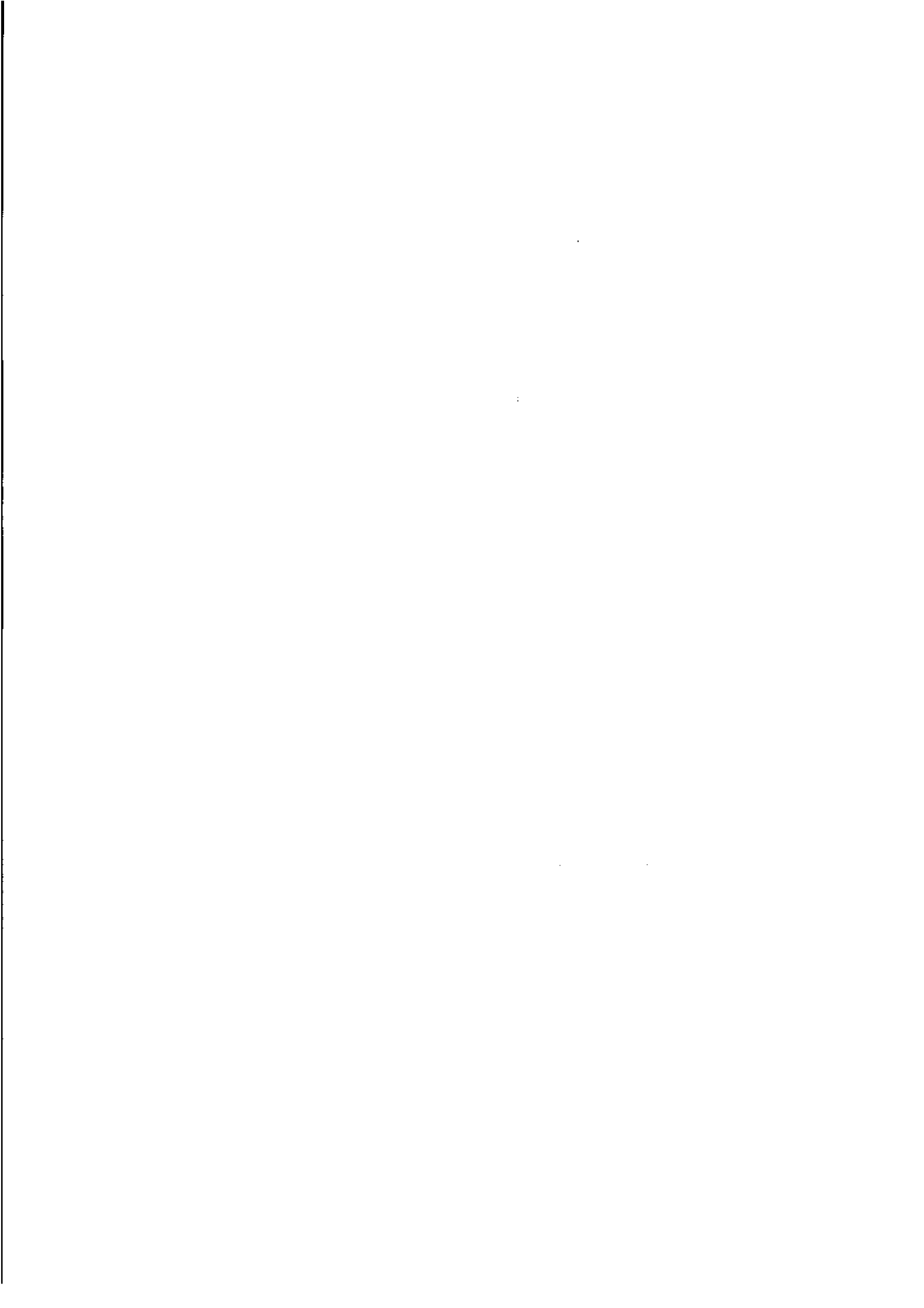


June 1997

EMBARGO: 11:30 AM (CANBERRA TIME) FRI 6 JUNE 1997

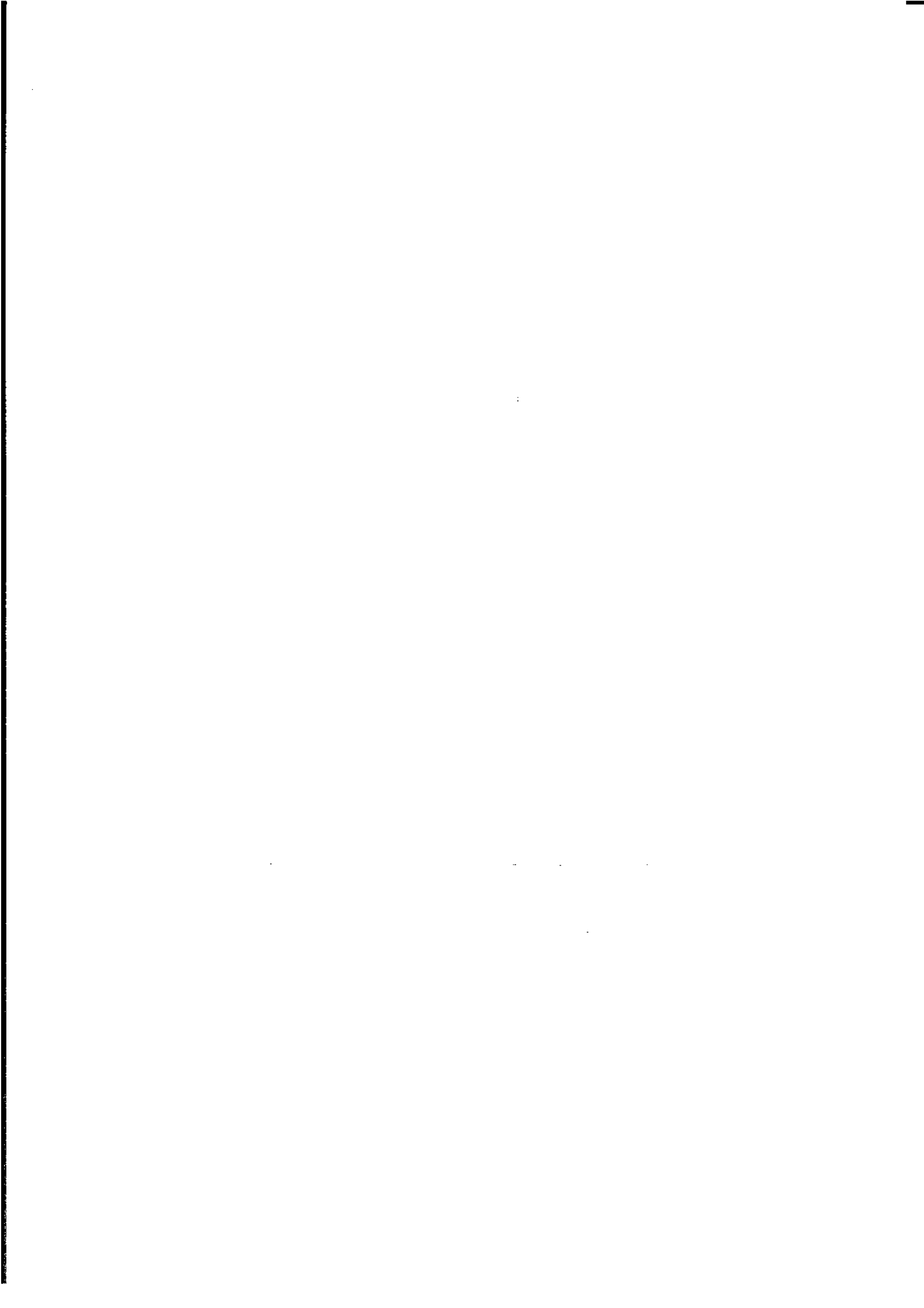
Tasmanian Statistical Indicators

ABS Catalogue No. 1303.6



**TASMANIAN STATISTICAL INDICATORS
JUNE 1997**

**Denis W. Rogers
Regional Director, Tasmania**



CONTENTS

	Page
MAIN FEATURES	v
TABLES	
1 Population	1
2 Births, deaths and marriages registered	1
3 Labour force status	2
4 Labour force status by region, males	3
5 Labour force status by region, females	4
6 Labour force status by region, persons	5
7 Teenage labour market	6
8 All employed persons by occupation	7
9 Employed wage and salary earners, sector and industry	8
10 Average hours worked	8
11 Job vacancies	9
12 Industrial disputes	9
13 Average weekly earnings of employees	10
14 Weekly award rates of pay indexes, full-time adult employees	10
15 Summary of annual movements in wages and prices	11
16 House price index numbers, Hobart	11
17 Consumer price index, Hobart and eight capital cities combined	12
18 Price index of materials used in building other than house building, Hobart	13, 14
19 Production of selected commodities	15
20 Livestock slaughtering: original	16
21 Livestock slaughtering: seasonally adjusted and trend	16
22 Meat production	17
23 Principal mineral concentrates produced	17
24 Sawmills and plywood mills, logs delivered and timber produced	18
25 Chipping and grinding of wood	18
26 Logs delivered for milling or chipping	19
27 Building approvals	20

INQUIRIES

- *for further information about statistics in this publication and the availability of related unpublished statistics, contact the Hobart office of the ABS on (03) 6222 5800.*
 - *for information about other ABS statistics and services, please refer to the back cover of this publication.*
-

	Page
28 Secured housing commitments	20
29 Banking statistics	21
30 Private new capital expenditure by type of asset	21
31 Passenger arrivals and departures, Tasmania	22
32 Total passenger arrivals by air and sea, Tasmania	22
33 Accommodation statistics	23
34 Registrations of new motor vehicles	24
35 Turnover of retail establishments at current prices	24
36 Major Statistical Indicators—Australia and State comparisons	25
 EXPLANATORY NOTES	 26

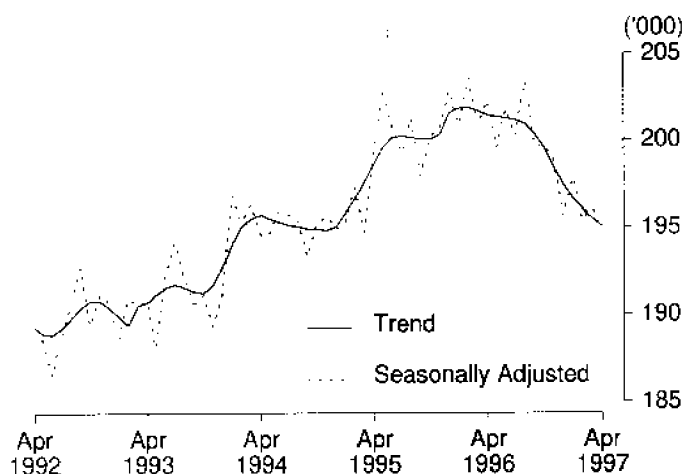
MAIN FEATURES

EMPLOYMENT

State comparisons
trend estimates

The Australian and State *trend* series comparisons are given on page 25. There was a decrease of 3.2% in Tasmania's employment over the year to April 1997. The largest percentage increase in employment was in Western Australia (2.5%). Next followed Queensland (1.4%), Victoria and New South Wales (1.2%), and South Australia (0.7%).

EMPLOYMENT, TASMANIA



Regional comparisons
original terms

In the Hobart and Southern Statistical Divisions the estimate of employment in *original* terms in March 1997 was 99,500 and compares with 101,500 in March 1996. The estimate of employment in the Northern Statistical Division in March 1997 was 56,000 and compares with 56,400 in March 1996. The estimate of employment in the Mersey-Lyell Statistical Division was 41,300 in March 1997, and compares with 43,700 for March 1996.

(See tables 3-8, pages 2-7.)

THE LABOUR FORCE

Trend estimates

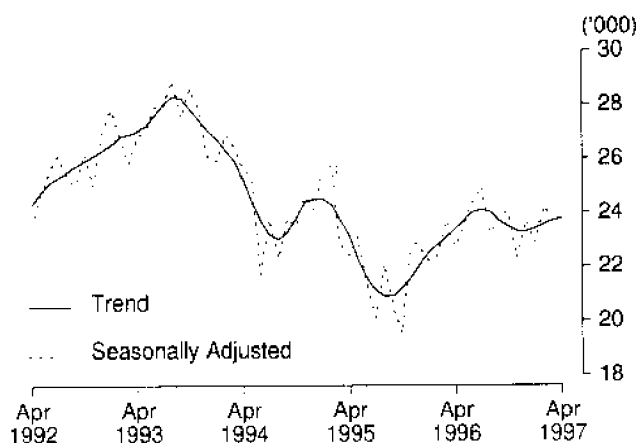
There were an estimated 218,800 persons (based on *trend* estimates) in the labour force in April 1997, and an estimated 369,500 civilian Tasmanians aged 15 years or more, yielding a labour force participation rate of 59.2%, compared with 61.0% in April 1996.

For males, the *trend* estimate of the participation rate was 69.8%, compared with 72.1% for April 1996. For females, the *trend* estimate of the participation rate was 49.0%, compared with 50.4% in April 1996. (See table 3, page 2.)

UNEMPLOYMENT

Trend estimates The *trend* estimate of the number of unemployed persons in Tasmania for April 1997 was 23,800. This compares with 23,400 for April 1996. The *trend* estimate of the unemployment rate of 10.9 per cent in April 1997 compares with 10.4 per cent in April 1996. (See tables 3-8, pages 2-7)

UNEMPLOYMENT, TASMANIA



AWARD RATES OF PAY INDEXES

Original terms The movement, from March 1996 to March 1997, of weekly award rates of pay indexes for Tasmania was 0.6% for full-time adult females and 0.6 for full-time adult males, for a combined annual increase of 0.6%. For Australia, the figures were 1.7% for females and 1.1% for males, for a combined annual increase of 1.3%.

For full-time adult female employees in Tasmania, the largest industry increases over this 12 month period occurred in the Transport and storage industry (6.9%); and the Manufacturing industry (1.3%).

For the same period for full-time adult male employees in Tasmania, the largest industry increases occurred in the Transport and storage industry (1.8%); and the Manufacturing industry (1.5%).

The largest occupation increases over the same period for full-time adult female employees occurred in Tradespersons (1.5%); and Para-professionals (1.1%).

For full-time adult male employees the largest occupation increases over the period occurred in Plant and machine operators, and drivers (1.2%); and Clerks (0.9%).

Source: *Award Rates of Pay Indexes, Australia*, ABS catalogue no. 6312.0.

BUILDING MATERIALS PRICE INDEXES

Original terms The price index of materials used in house building in Hobart fell by 0.2% over the twelve months ending March 1997. All other capital cities recorded increases over the period, with Adelaide being the highest, at 2.5%. The weighted average of the capital cities increased by 1.1% over the same period.

For the month of March 1997, the index for Hobart fell by 0.1%, while that for the weighted average of the eight capital cities increased by 0.3%. The main contributor to the rise in the index nationally was a rise in the price of cupboards and fittings, which was mostly offset by small price decreases for other materials.

The price index of materials used in building other than house building in Hobart recorded an increase of 1.3% over the twelve months ending March 1997. All of the other state capitals recorded increases over the year, with Perth being the highest at 1.5%. The index for the weighted average of the eight capital cities increased by 0.8 % over the same period.

For the month of March, the index for Hobart increased by 0.1%, which was the same as for the weighted average of the eight capital cities. All of the capitals recorded small increases, except for Perth (no change), and Adelaide (-0.3%).

Components which recorded the largest increases in Hobart's materials other than house building price index over the year ending March 1997 were steel decking and cladding, and fabricated steel products (up 5.6%), and paint and other coatings (up 4.7%).
(See tables 15 and 18, pages 11 and 13)

LIVESTOCK SLAUGHTERING

Trend estimates The March 1997 *trend* estimate for the slaughtering of cattle and calves in Tasmania was 0.5% above that recorded in the previous month. The number of sheep and lambs slaughtered increased by 1.5%, and the number of pigs slaughtered increased by 2.5% over the same period.

The *trend* estimate of the number of cattle and calves slaughtered in March 1997 was 22,500 which was 20.9% above the number slaughtered in March 1996.

The *trend* estimate for the slaughtering of sheep and lambs was 69,500 in March 1997, which was 15.1% above the number slaughtered in March 1996. This was the sixth successive monthly increase in the number of sheep and lambs slaughtered in Tasmania, but well below the trend estimate of 81,700 slaughtered in March 1995.

The *trend* estimate of 7,000 pigs slaughtered in March 1997 was 2.9% below the number slaughtered in March 1996, and 10.2% below the number slaughtered in March 1995.
(See table 21, page 16)

BUILDING APPROVALS

Original terms There were 125 dwelling units approved during March 1997 in Tasmania. This was 18.3% below the February 1997 figure of 153 and a 24.2% decrease on the number recorded for March 1996 (165).

For the twelve months ended March 1997 there were 2,000 new dwelling units approved, 22.6% below the 2,583 units recorded for the twelve months ended March 1996.

The value of new residential building approved, at current prices, in March 1997 was \$10.9 million, 20.3% below the February 1997 figure, and 20.6% below the figure recorded for March 1996.

The value of non-residential building approved, at current prices, in March 1997 was \$10.1 million, 18.9% below the February 1997 figure and 18.9% below the March 1996 figure.

(See table 27, page 20.)

HOUSING FINANCE

Trend estimates The *trend* estimate for the number of new secured housing finance commitments entered into in Tasmania in March 1997 was 758 dwellings, a decrease of 4.2% on the previous month's figure of 791, and a fall of 13.6% when compared to the March 1996 figure of 877.

The value of new commitments in March 1997 was \$53.5 million, down 2.6% on the February value of \$54.9 million, and down 10.7% from \$59.9 million recorded in March 1996.

Nationally, the total number of Australian dwelling commitments increased 4.5% over the past year, from 38,136 to 39,834 dwellings, and the value increased 15.4% from \$3,708.0 million to \$4,279.2 million.

(See table 28, page 20.)

GOVERNMENT FINANCE STATISTICS

Original terms During the 1995-96 financial year, Commonwealth Government outlays totalled \$133,077 million, an increase of 4.1% on 1994-95. The proportion of current and capital outlays was 97.1% and 2.9% respectively. The major components of current outlays (\$129,247 million) were personal benefit payments (41.9%) and grants to other government and the private sector (27.9%). Capital outlays for the 1995-96 financial year totalled \$3,831 million.

Tasmania State and local government outlays for 1995-96 totalled \$2,629 million, 86.3% of which was current outlays. Education accounted for 24.4% and Health for 16.8% of current outlays. Gross fixed capital expenditure totalled \$374 million or 14.2% of total outlays for the State. Transport and communication accounted for 26.7%, and Housing and community amenities for 17.9% of capital outlays. Source: *Government Finance Statistics Australia, 1995-96*, ABS catalogue no. 5512.0.

NEW MOTOR VEHICLE REGISTRATIONS

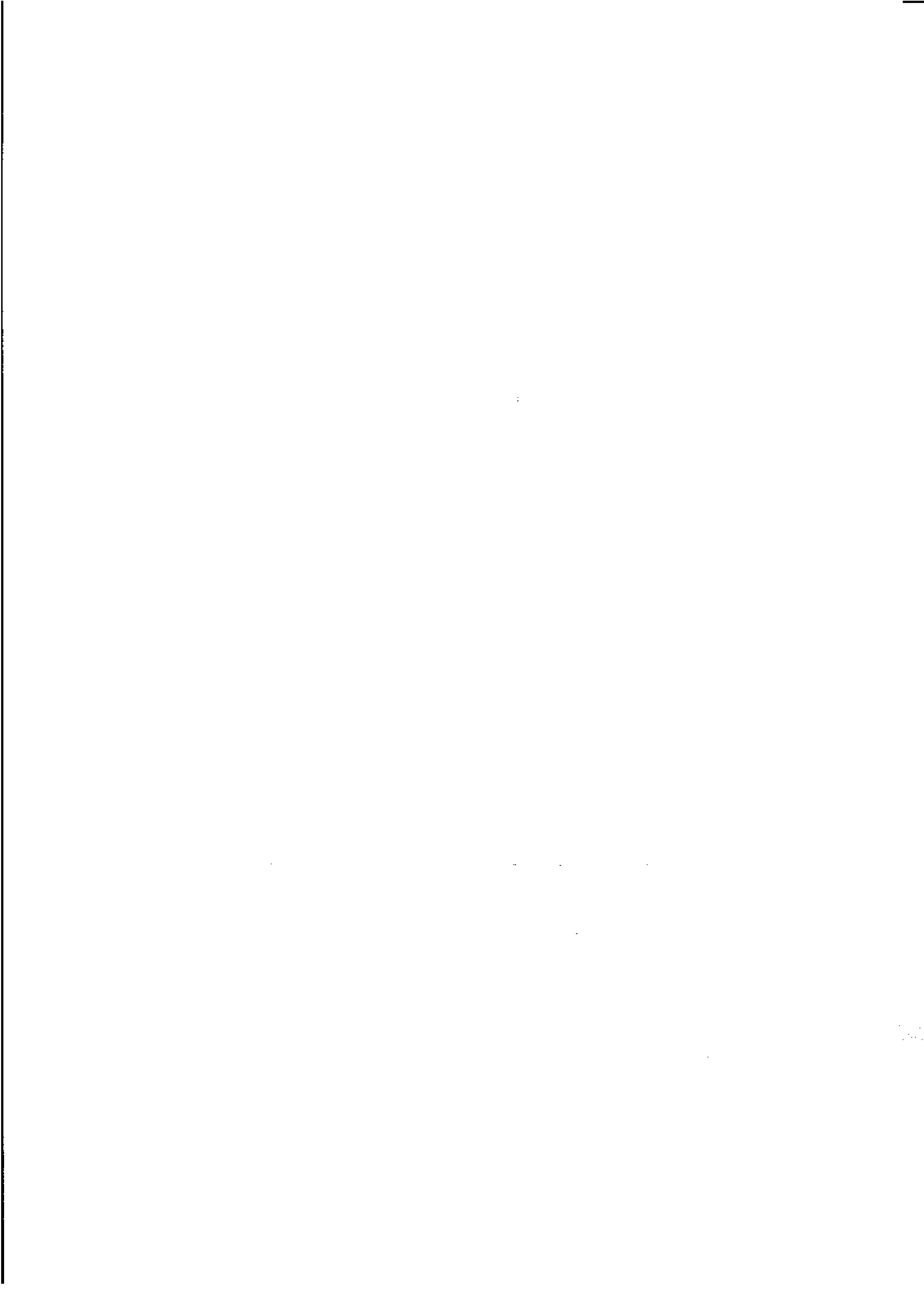
Original terms There were 958 new motor vehicles (excluding motorcycles) registered in Tasmania during February 1997. This was 6.7% above the 898 registered in February 1997 but 0.3% below the figure for March 1996 (961).

Of the new motor vehicles (excluding motorcycles) registered in March 1997 in Tasmania, 3 were vehicles registered by vehicle rental businesses. This was the same number as registered by vehicle rental businesses in February 1997 and in March 1996.

(See table 34, page 24.)

RETAIL

- Original terms In *original* terms, the estimate of retail turnover in Australia during March 1997 was \$10,032.0 million, 2.2% above the figure recorded for March 1996.
- In *original* terms, the estimate of retail turnover in March 1997, for Tasmania, was \$242.2 million, 0.4% above the figure recorded for March 1996.
- Trend estimates The *trend* estimate of retail turnover in Australia during March 1997, was \$10,489.5 million, 3.2% higher than for March 1996.
- The *trend* estimate of retail turnover in Tasmania recorded for March 1997, was \$250.4 million, an increase of 1.3% on the March 1996 figure.
- The monthly *trend* estimate for turnover of retail and selected service establishments for Tasmania has shown an increase for the last seven months.
- (See table 35, page 24.)



1

POPULATION: Original

Year or quarter	Estimated resident population at end of period	Natural increase ¹	Net estimated migration gain	Total population growth	Annual growth rate ²
	'000	'000	'000	'000	%
Year ended 30 June					
1992	469.7	3.2	- 0.3	2.9	0.62
1993	471.4	3.1	- 1.5	1.7	0.35
1994	472.5	3.1	- 2.0	1.1	0.24
1995	473.0	2.9	- 2.4	0.5	0.11
1996	473.4	2.6	- 2.2	0.4	0.08
Quarter					
1995					
June	473.0	0.7	- 0.7	0.0	0.11
September p	473.2	0.7	- 0.5	0.2	0.09
December p	473.2	0.5	- 0.6	- 0.1	0.07
1996					
March p	473.2	0.8	- 0.7	0.1	0.04
June p	473.4	0.6	- 0.4	0.1	0.08
September p	473.4	0.6	- 0.5	0.1	0.04

¹ Excess of live births registered over deaths registered (based on usual State of residence).

² Percentage growth from same quarter in previous year.

(Source: Australian Demographic Statistics, ABS catalogue number 3101.0)

2

BIRTHS, DEATHS AND MARRIAGES REGISTERED: Original

Year or quarter	Births		Deaths		Infant mortality ¹		Marriages	
	No.	Rate ²	No.	Rate ²	Deaths	Rate ³	No.	Rate ²
Year ended 31 December								
1991	6 857	14.7	3 664	7.9	61	8.9	3 069	6.6
1992	6 956	14.8	3 722	7.9	43	6.2	3 081	6.6
1993	6 804	14.4	3 618	7.7	37	5.4	3 055	6.5
1994	6 836	14.5	3 909	8.3	46	6.7	2 887	6.1
1995	6 558	13.9	3 739	7.9	36	5.5	2 840	6.0
Quarter								
1995								
June	1 611	..	954	..	10	6.2	667	..
September	1 697	..	982	..	9	5.3	307	..
December	1 446	..	906	..	9	6.2	799	..
1996								
March p	1 748	..	979	..	10	5.7	857	..
June p	1 524	..	969	..	6	3.9	789	..
September p	1 603	..	1 034	..	8	5.0	349	..

¹ Registered deaths of children under one year of age.

² Rate per 1,000 of estimated mean population.

³ Rate per 1,000 live births.

(Source: Australian Demographic Statistics, ABS catalogue number 3101.0)

3

LABOUR FORCE STATUS¹: Seasonally adjusted and trend

Month	Seasonally adjusted series				Trend Series			
	Employed	Unemployed	Unemployment rate	Participation rate	Employed	Unemployed	Unemployment rate	Participation rate
	'000	'000	%	%	'000	'000	%	%
MALES								
1996								
April	115.7	15.0	11.5	72.2	115.6	14.9	11.4	72.1
May	114.6	14.8	11.4	71.5	115.7	15.0	11.5	72.1
June	116.0	15.1	11.5	72.4	115.8	15.0	11.5	72.2
July	115.1	15.3	11.8	72.0	115.9	14.8	11.3	72.1
August	117.7	14.1	10.7	72.7	115.9	14.6	11.2	71.9
September	115.6	14.4	11.1	71.7	115.6	14.3	11.0	71.6
October	114.4	14.2	11.1	70.9	115.1	14.0	10.9	71.1
November	114.8	12.8	10.1	70.3	114.4	13.9	10.8	70.7
December	113.0	14.7	11.5	70.3	113.7	13.9	10.9	70.3
1997								
January	113.4	13.6	10.7	69.9	113.1	14.1	11.1	70.1
February	112.1	14.7	11.6	69.8	112.7	14.3	11.3	69.9
March	113.4	14.0	11.0	70.1	112.3	14.5	11.4	69.9
April	111.5	15.4	12.1	69.8	112.1	14.8	11.6	69.8
FEMALES								
1996								
April	86.5	7.7	8.2	50.3	85.8	8.5	9.0	50.4
May	84.9	8.7	9.3	50.0	85.6	8.7	9.2	50.3
June	85.7	9.3	9.7	50.7	85.4	9.0	9.5	50.4
July	85.1	9.6	10.1	50.5	85.2	9.2	9.8	50.4
August	85.6	9.1	9.6	50.5	85.0	9.4	10.0	50.4
September	84.0	9.5	10.1	49.8	84.7	9.5	10.1	50.2
October	85.3	9.8	10.3	50.6	84.4	9.5	10.1	50.0
November	84.0	9.4	10.1	49.8	84.1	9.4	10.1	49.8
December	82.6	9.0	9.8	48.8	83.8	9.4	10.1	49.6
1997								
January	84.5	9.3	9.9	49.9	83.5	9.3	10.1	49.4
February	83.3	9.5	10.3	49.4	83.3	9.3	10.0	49.3
March	82.6	9.7	10.5	49.2	83.1	9.1	9.9	49.1
April	83.3	8.3	9.1	48.7	83.0	9.0	9.8	49.0
TOTAL								
1996								
April	202.2	22.7	10.1	61.0	201.4	23.4	10.4	61.0
May	199.5	23.5	10.5	60.5	201.3	23.7	10.5	61.1
June	201.7	24.4	10.8	61.4	201.2	24.0	10.6	61.1
July	200.2	24.9	11.1	61.1	201.1	24.1	10.7	61.1
August	203.3	23.2	10.2	61.4	200.9	24.0	10.7	61.0
September	199.6	23.9	10.7	60.6	200.3	23.7	10.6	60.7
October	199.6	24.0	10.7	60.6	199.5	23.5	10.5	60.4
November	198.8	22.3	10.1	59.9	198.4	23.3	10.5	60.1
December	195.6	23.7	10.8	59.4	197.4	23.3	10.6	59.8
1997								
January	197.8	22.9	10.4	59.8	196.6	23.4	10.6	59.6
February	195.4	24.2	11.0	59.5	196.0	23.6	10.7	59.4
March	196.0	23.7	10.8	59.5	195.5	23.7	10.8	59.3
April	194.7	23.6	10.8	59.1	195.0	23.8	10.9	59.2

¹ For explanation of terms and concepts, refer to *Labour Force, Australia*, ABS catalogue number 6203.0. (Source: *Labour Force Australia*, ABS catalogue number 6203.0)

4

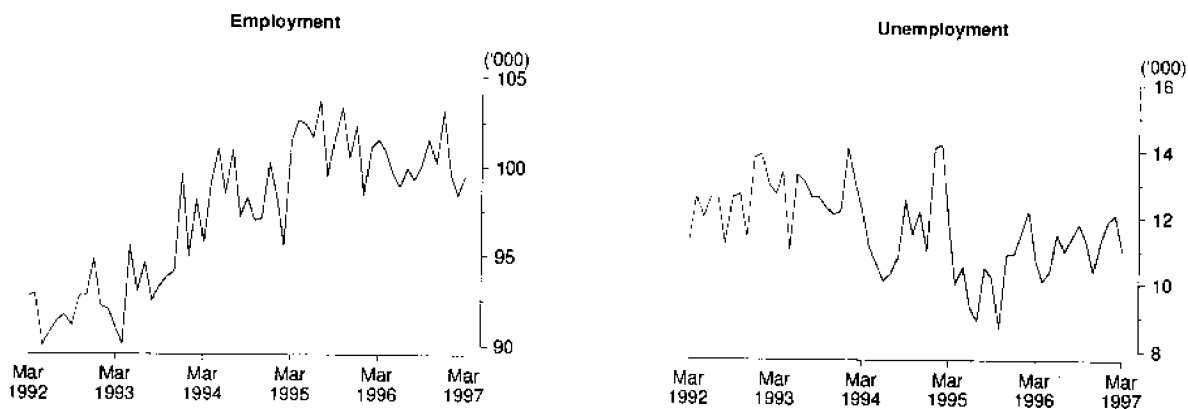
LABOUR FORCE STATUS BY REGION, MALES^{1, 2}: Original

Month		Total employed '000	Total unemployed '000	Unemployment rate %	Participation rate %
HOBART AND SOUTHERN STATISTICAL DIVISIONS					
1994	March	52.8	8.6	14.0	71.3
1996	March	57.3	6.9	10.8	72.0
1997	January	55.1	7.1	11.4	69.3
	February	54.7	6.9	11.2	68.4
	March	55.4	6.4	10.3	68.5
NORTHERN STATISTICAL DIVISION					
1994	March	32.7	4.7	12.6	73.7
1996	March	31.4	4.7	13.0	72.3
1997	January	33.8	4.4	11.4	73.4
	February	33.4	4.8	12.5	73.3
	March	34.2	3.9	10.1	72.9
MERSEY-LYELL STATISTICAL DIVISION					
1994	March	26.9	4.1	13.2	72.2
1996	March	27.3	2.9	9.7	71.9
1997	January	24.7	3.5	12.4	70.5
	February	25.2	3.4	11.8	72.5
	March	24.5	3.6	12.7	71.5
TASMANIA					
1994	March	112.4	17.4	13.4	72.2
1996	March	116.0	14.5	11.1	72.1
1997	January	113.6	14.9	11.6	70.8
	February	113.4	15.0	11.7	70.7
	March	114.1	13.8	10.8	70.4

¹ For explanation of terms and concepts, refer to *Labour Force, Australia*, ABS catalogue number 6203.0.

² Data in this table are original series, i.e. they are not part of a seasonally adjusted or a trend series. Accordingly, care should be exercised when using these data. New monthly data from each quarter (March, June, September and December) are published two months after the quarter. (Source: Labour Force Estimates—microfiche tables.)

Hobart and Southern Statistical Divisions—Persons: Original



5

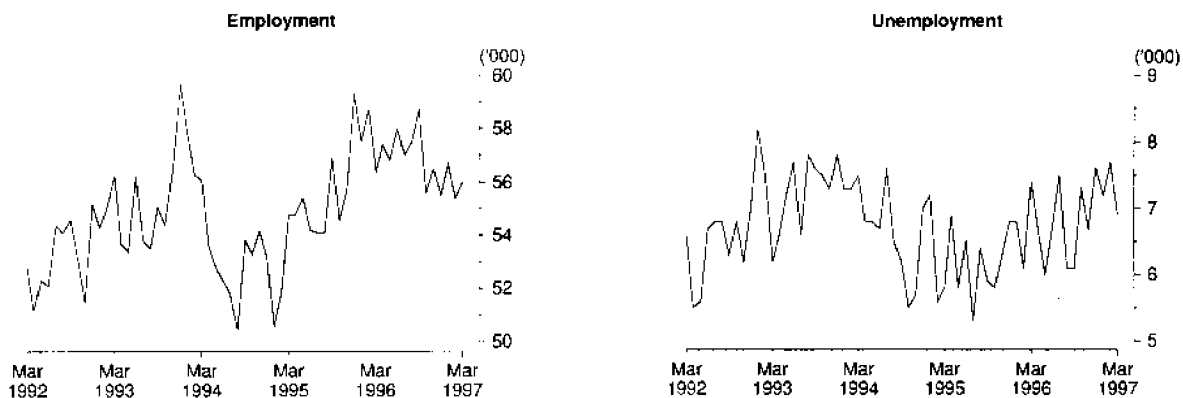
LABOUR FORCE STATUS BY REGION, FEMALES^{1, 2}: Original

Month		Total employed '000	Total unemployed '000	Unemployment rate %	Participation rate %
HOBART AND SOUTHERN STATISTICAL DIVISIONS					
1994	March	43.0	3.6	7.7	50.7
1996	March	44.2	3.8	7.9	51.2
1997	January	44.5	4.8	9.8	52.3
	February	43.6	5.2	10.7	51.5
	March	44.1	4.6	9.4	51.0
NORTHERN STATISTICAL DIVISION					
1994	March	23.4	2.8	10.7	50.0
1996	March	25.1	2.7	9.7	53.9
1997	January	22.9	2.9	11.1	49.0
	February	22.0	2.9	11.6	46.7
	March	21.8	3.1	12.3	47.6
MERSEY-LYELL STATISTICAL DIVISION					
1994	March	16.4	2.2	11.6	44.8
1996	March	16.4	2.4	12.9	44.8
1997	January	15.5	2.3	13.0	43.6
	February	16.1	2.5	13.2	46.8
	March	16.8	2.1	10.9	46.9
TASMANIA					
1994	March	82.9	8.6	9.4	49.2
1996	March	85.7	8.9	9.4	50.5
1997	January	82.9	10.0	10.8	49.5
	February	81.8	10.5	11.4	49.1
	March	82.7	9.7	10.5	49.2

¹ For explanation of terms and concepts, refer to *Labour Force, Australia*, ABS catalogue number 6203.0.

² Data in this table are original series, i.e. they are not part of a seasonally adjusted or a trend series. Accordingly, care should be exercised when using these data. New monthly data from each quarter (March, June, September and December) are published two months after the quarter. (Source: Labour Force Estimates—microfiche tables.)

Northern Statistical Division—Persons: Original



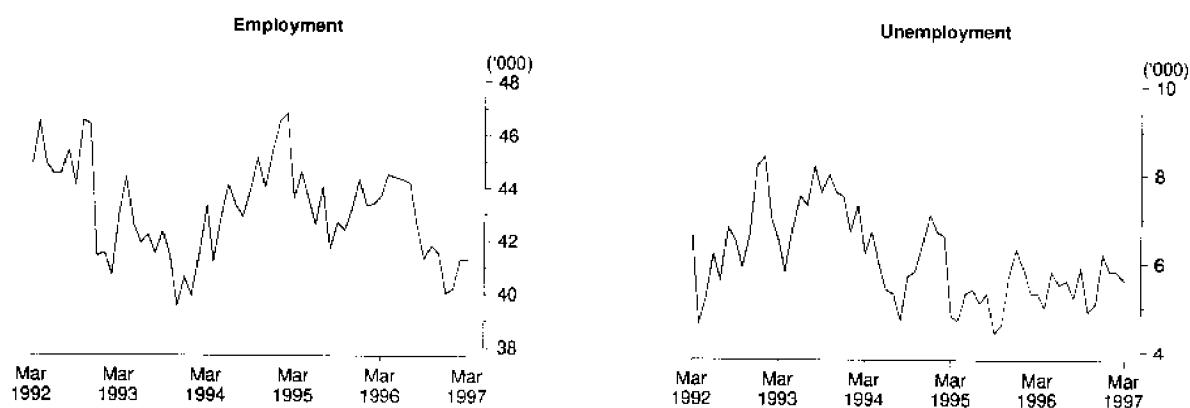
6

LABOUR FORCE STATUS BY REGION, PERSONS^{1, 2}: **Original**

Month		Total employed '000	Total unemployed '000	Unemployment rate %	Participation rate %
HOBART AND SOUTHERN STATISTICAL DIVISIONS					
1994	March	95.8	12.2	11.3	60.6
1996	March	101.5	10.7	9.6	61.3
1997	January	99.6	11.9	10.7	60.6
	February	98.4	12.1	11.0	59.7
	March	99.5	11.0	9.9	59.5
NORTHERN STATISTICAL DIVISION					
1994	March	56.1	7.5	11.9	61.6
1996	March	56.4	7.4	11.5	62.9
1997	January	56.7	7.2	11.3	61.1
	February	55.4	7.7	12.2	59.9
	March	56.0	6.9	11.0	60.3
MERSEY-LYELL STATISTICAL DIVISION					
1994	March	43.3	6.2	12.6	58.7
1996	March	43.7	5.3	10.9	58.4
1997	January	40.2	5.8	12.6	56.9
	February	41.3	5.8	12.3	59.6
	March	41.3	5.6	12.0	59.0
TASMANIA					
1994	March	195.2	26.0	11.7	60.5
1996	March	201.6	23.4	10.4	61.1
1997	January	196.5	24.9	11.3	59.9
	February	195.1	25.6	11.6	59.8
	March	196.8	23.5	10.7	59.6

¹ For explanation of terms and concepts, refer to *Labour Force, Australia*, ABS catalogue number 6203.0.

² Data in this table are original series, i.e. they are not part of a seasonally adjusted or a trend series. Accordingly, care should be exercised when using these data. New monthly data from each quarter (March, June, September and December) are published two months after the quarter. (Source: Labour Force Estimates—microfiche tables.)

Mersey-Lyell Statistical Division—Persons: **Original**

7

TEENAGE LABOUR MARKET^{1, 2}; Original

Month	Employed		Unemployed		Labour force	Not in labour force	Civilian population aged 15-19	Unemployment rate	Unemployment population ratio	Participation rate
	Full-time	Total	Looking for full-time work	Total						
	'000	'000	'000	'000	'000	'000	'000	%	%	%
ATTENDING NEITHER SCHOOL NOR A TERTIARY INSTITUTION FULL TIME										
1994 April	7.4	9.9	2.7	2.7	12.6	1.4	14.0	21.1	19.3	89.8
1996 April	8.0	10.8	2.2	2.4	13.2	1.1	14.3	18.3	16.8	92.5
1997 February	6.7	8.7	3.2	3.2	11.9	2.3	14.3	27.3	22.8	83.6
March	6.9	8.9	3.2	3.5	12.5	1.4	13.8	28.2	25.4	90.1
April	6.3	8.5	2.8	2.9	11.5	1.8	13.3	25.6	22.1	86.4
ATTENDING SCHOOL OR A TERTIARY INSTITUTION FULL TIME										
1994 April	0.1	5.1	0.4	1.8	6.9	13.4	20.3	26.1	8.9	34.0
1996 April	0.1	6.2	0.2	1.4	7.7	12.1	19.8	18.2	7.1	38.9
1997 February	1.0	6.0	0.6	1.7	7.7	12.3	20.0	22.2	8.6	38.6
March	0.1	5.2	0.6	2.4	7.6	12.9	20.5	32.0	11.9	37.0
April	0.4	5.8	0.7	1.8	7.7	13.4	21.1	23.9	8.7	36.3
TOTAL										
1994 April	7.6	15.0	3.1	4.4	19.5	14.9	34.3	22.9	12.8	56.7
1996 April	8.1	17.0	2.4	3.9	20.9	13.2	34.1	18.5	11.4	61.3
1997 February	7.7	14.7	3.7	5.0	19.6	14.5	34.3	25.3	14.5	57.3
March	7.0	14.1	3.8	5.9	20.0	14.2	34.3	29.6	17.3	58.4
April	6.7	14.3	3.5	4.8	19.1	15.2	34.3	24.9	13.9	55.7

¹ Persons aged 15-19 years.

² For explanation of terms and concepts, refer to *Labour Force, Australia*, ABS catalogue number 6203.0.
(Source: Labour Force Estimates—microfiche tables.)

8

ALL EMPLOYED PERSONS BY OCCUPATION¹: Original

Occupation	May 1995		May 1996		Proportion of total employed	
	Persons	Males	Females	Persons	May 1995	May 1996
	'000	'000	'000	'000	%	%
Managers and administrators	19.0	13.6	3.4	17.0	9.4	8.5
Farmers and farm managers	6.5	4.0	0.9	4.9	3.2	2.4
Managing supervisors	6.9	6.5	1.5	8.0	3.4	4.0
Other	5.6	3.1	1.2	4.1	2.8	2.0
Professionals	25.1	12.8	10.7	23.5	12.5	11.7
Building and professional engineers	2.4	1.6	—	1.6	1.2	0.8
Health diagnosis and treatment practitioners	3.0	1.3	1.5	2.8	1.5	1.4
School teachers	8.5	1.4	3.7	5.1	4.2	2.5
Business professionals	3.7	3.8	1.4	5.2	1.9	2.6
Other	7.4	4.7	4.1	8.8	3.7	4.4
Para-professionals	14.3	7.3	5.8	13.1	7.1	6.5
Engineering and building associates and technicians	1.6	1.7	0.1	1.8	0.8	0.9
Registered nurses	5.7	0.4	4.0	4.5	2.8	2.2
Other	7.0	5.2	1.7	6.8	3.5	3.4
Tradespersons	29.1	26.3	3.4	29.7	14.4	14.8
Metal fitting and machining tradespersons	2.8	2.4	—	2.4	1.4	1.2
Electrical and electronics tradespersons	4.0	4.5	0.1	4.6	2.0	2.3
Building tradespersons	6.4	6.9	0.1	7.0	3.2	3.5
Other	15.9	12.4	3.2	15.7	7.9	7.8
Clerks	33.0	8.8	26.1	34.9	16.4	17.4
Stenographers and typists	3.8	0.1	3.3	3.4	1.9	1.7
Receptionists, telephonists and messengers	5.0	1.2	4.6	5.7	2.5	2.8
Other	24.2	7.5	18.2	25.8	12.0	12.8
Salespersons and personal service workers	34.2	9.7	23.0	32.7	17.0	16.3
Sales representatives	2.9	2.0	1.3	3.3	1.4	1.6
Sales assistants	15.3	4.0	10.5	14.5	7.6	7.2
Other	16.0	3.7	11.2	14.9	7.9	7.4
Plant and machine operators, and drivers	16.2	15.1	2.1	17.2	8.0	8.6
Road and rail transport drivers	6.9	6.1	0.6	6.6	3.4	3.3
Machine operators	4.4	3.3	1.5	4.8	2.2	2.4
Other	4.9	5.7	—	5.8	2.4	2.9
Labourers and related workers	30.6	21.2	11.6	32.8	15.2	16.3
Trades assistants and factory hands	5.4	3.7	1.4	5.1	2.7	2.5
Agricultural labourers and related workers	7.0	5.8	2.2	8.1	3.5	4.0
Cleaners	6.4	1.3	4.6	5.9	3.2	2.9
Construction and mining labourers	2.0	2.9	0.1	3.0	1.0	1.5
Other	9.8	7.5	3.3	10.7	4.9	5.3
Total employed	201.4	115.0	86.0	200.9	100.0	100.0

¹ For explanation of terms and concepts, refer to *Labour Force, Australia*, ABS catalogue number 6203.0. (Source: Labour Force Estimates—unpublished data.)

9

EMPLOYED WAGE AND SALARY EARNERS, SECTOR AND INDUSTRY¹: Original

Industry	Employees, February 1995					Percentage distribution	
	Private	Public	Private and public			February 1993	February 1995
	No. ('000)	No. ('000)	Males	Females	Persons		
Agriculture, forestry, fishing and hunting	n.a.	0.7	n.a.	n.a.	n.a.	n.a.	n.a.
Mining	1.5	—	1.4	0.1	1.5	1.7	1.1
Manufacturing	20.3	0.1	15.4	4.9	20.4	14.8	15.2
Electricity, gas and water, construction	6.0	2.7	7.6	1.0	8.7	6.8	6.5
Wholesale and retail trade	26.0	—	15.0	11.0	26.1	20.8	19.4
Transport and storage	3.6	1.5	4.1	1.1	5.2	4.1	3.9
Communication	—	2.3	1.8	0.6	2.3	1.6	1.7
Finance, property and business services	10.1	0.9	4.9	6.0	10.9	9.3	8.1
Public administration and defence	—	10.5	6.5	4.0	10.5	7.0	7.8
Community services	14.0	23.4	11.9	25.5	37.4	24.9	27.8
Recreation, personal and other services	10.2	0.6	4.1	6.7	10.8	8.4	8.0
Total all industries	91.8	42.6	73.2	61.2	134.4	100.0	100.0

¹ For explanation of terms and concepts, refer to *Employed Wage and Salary Earners, Australia*, catalogue number 6248.0. (Source: *Employed Wage and Salary Earners*, ABS catalogue number 6248.0.)

10

AVERAGE HOURS WORKED: Original

Month	Average weekly total hours worked, all employed persons ¹			Average weekly overtime hours ²		Percentage of employees working overtime ²
	Males	Females	Persons	Per employee	Per employee working overtime	
1994						
February	37.6	25.8	32.7	1.0	6.9	14.0
1996						
February	37.7	25.6	32.7	0.9	6.5	14.1
May	40.1	27.0	34.5	0.9	5.6	16.0
August	38.8	27.2	33.9	0.8	5.4	14.4
November	38.7	26.8	33.6	0.8	6.2	12.7
1997						
February	38.0	26.2	33.1	0.9	6.6	13.6

¹ For explanation of terms and concepts, refer to *Labour Force, Australia*, ABS catalogue number 6203.0.
² For explanation of terms and concepts, refer to *Job Vacancies and Overtime, Australia*, ABS catalogue number 6354.0.

11

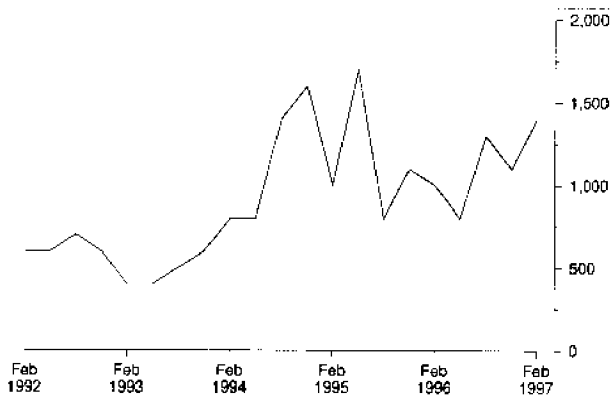
JOB VACANCIES¹: Original

Period	Number	Rate ² %
1994		
February	800	0.6
1996		
February	1 000	0.6
May	800	0.5
August	1 300	0.8
November	1 100	0.7
1997		
February	1 400	1.0

¹ For explanation of terms and concepts refer to *Job Vacancies and Overtime, Australia*, catalogue number 6354.0.

² Job vacancies are expressed as a percentage of the number of job vacancies divided by the number of employees plus job vacancies.

JOB VACANCIES: Original



12

INDUSTRIAL DISPUTES¹: Original

Month	Working days lost '000	Twelve months ending	Working days lost per thousand employees
		1996	
January	0.8	January	24
February	0.1	February	23
March	—	March	20
April	0.1	April	20
May	0.2	May	19
June	0.4	June	17
July	4.4	July	39
August	5.2	August	70
September	1.3	September	77
October	0.1	October	77
November	0.3	November	79
December	0.1	December	78
		1997	
January	0.0	January	73
Twelve months ended 1997			
January	12.2		

¹ For explanation of terms and concepts, refer to *Industrial Disputes, Australia*, ABS catalogue number 6321.0.

13

AVERAGE WEEKLY EARNINGS OF EMPLOYEES¹: Original and trend

Quarter	Survey reference period	Full-time adult males		All males	Full-time adult females		All females	Full-time adult persons		All employees
		Weekly ordinary time earnings	Weekly total earnings	Weekly total earnings	Weekly ordinary time earnings	Weekly total earnings	Weekly total earnings	Weekly ordinary time earnings	Weekly total earnings	Weekly total earnings
		\$	\$	\$	\$	\$	\$	\$	\$	\$
ORIGINAL										
1996										
March	16 February	652.70	691.40	617.80	561.10	569.30	391.80	622.90	651.70	510.00
June	17 May	663.40	702.80	621.90	570.10	583.20	389.30	631.90	662.40	503.30
September	16 August	666.90	699.20	624.30	556.30	567.40	387.70	629.10	654.10	506.50
December	15 November	688.50	728.50	643.00	574.20	584.90	393.70	649.90	680.00	517.70
1997										
March	21 February	705.80	742.10	658.80	584.30	594.80	407.80	664.40	691.90	533.10
TREND										
1996										
March	16 February	653.10	691.10	614.30	560.00	571.10	392.90	622.00	651.00	506.40
June	17 May	661.40	698.70	621.90	563.70	575.10	391.20	628.80	657.40	507.10
September	16 August	672.40	709.70	631.80	567.20	578.60	391.30	636.90	665.60	511.00
December	15 November	686.60	723.40	641.80	572.10	583.00	394.40	647.50	675.60	517.70
1997										
March	21 February	702.70	738.40	650.60	578.70	588.50	399.00	659.80	686.70	525.10

¹ For explanation of terms and concepts, refer to *Average Weekly Earnings, States and Australia*, ABS catalogue number 6302.0. (Source: *Average Weekly Earnings, States and Australia*, ABS catalogue number 6302.0.)

14

WEEKLY AWARD RATES OF PAY INDEXES, FULL-TIME ADULT EMPLOYEES¹: Original (Base: June 1985 = 100.0)

Industry	1994	1996	1997		
	March	March	January	February	March
Mining	137.7	137.7	137.7	137.7	137.7
Manufacturing	146.9	150.6	152.8	152.8	152.8
Electricity, gas and water	133.4	136.4	136.6	136.6	136.6
Construction	142.6	144.8	145.4	145.4	145.4
Wholesale trade	139.9	143.3	143.5	143.5	143.5
Retail trade	139.6	142.8	142.8	142.8	142.8
Transport and storage	138.9	143.3	146.7	146.7	146.7
Communication	135.4	135.4	135.4	135.4	135.4
Finance, property and business services	137.8	139.6	139.6	139.6	139.6
Public administration and defence	148.3	155.2	156.0	156.0	156.0
Community services	140.8	145.2	145.8	145.8	145.8
Recreation, personal and other services	149.2	153.0	153.8	153.8	153.8
Total all industries	141.7	145.4	146.3	146.3	146.3

¹ For explanation of terms and concepts, refer to *Award Rates of Pay Indexes, Australia*, ABS catalogue number 6312.0. (Source: *Award Rates of Pay Indexes, Australia*, ABS catalogue number 6312.0.)

15

SUMMARY OF ANNUAL MOVEMENTS IN WAGES AND PRICES: **Original**

Period	CPI. All groups Hobart	Price index of materials used in house building. All groups, Hobart	Price index of materials used in building other than house building. All groups, Hobart	Average weekly total, earnings, full-time adult employees	Weekly award rates of pay index, full-time adult employees
PERCENTAGE CHANGE FROM PREVIOUS YEAR					
1994					
March	2.6	3.1	0.5	..	1.7
1996					
March	3.4	1.6	2.0	..	1.2
1996					
April	..	1.7	1.4	..	1.2
May	..	0.6	1.2	3.7	1.1
June	3.0	0.7	1.0	..	1.3
July	..	- 0.1	1.0	..	0.9
August	..	- 0.2	0.9	3.0	0.9
September	2.3	- 0.2	0.8	..	0.8
October	..	- 0.8	0.4	..	0.9
November	..	- 1.0	0.7	4.9	0.7
December	1.8	- 0.5	1.0	..	0.7
1997					
January	..	- 0.7	0.9	..	0.1
February	..	- 0.3	1.1	4.5	0.8
March	1.5	- 0.2	1.3	..	0.6

(Sources:

Consumer Price Index, ABS catalogue number 6401.0,

Price Index of Materials Used in House Building, ABS catalogue number 6408.0,

Price Index of Materials Used in Other than House Building, ABS catalogue number 6407.0,

Average Weekly Earnings, States and Australia, ABS catalogue number 6302.0,

Award Rates of Pay Indexes, Australia, ABS catalogue number 6312.0.)

16

HOUSE PRICE INDEX NUMBERS¹, HOBART: **Original**

(Base of each Index: 1989-90 = 100.0)

	Established house price index		Project home price index	
	Index	% change ²	Index	% change ²
1993-94	122.5	5.1	117.7	3.2
1994-95	129.0	5.3	121.3	3.1
1995-96	129.8	0.6	123.4	1.7
1994				
December	128.2	—	120.5	0.3
1995				
March	129.4	0.9	121.6	0.9
June	130.1	0.5	123.1	1.2
September	129.2	- 0.7	123.5	0.3
December	129.1	- 0.1	123.5	—
1996				
March	129.8	+ 0.5	123.3	- 0.2
June	131.2	+ 1.1	123.3	—
September	130.2	- 0.8	123.3	—
December	128.5	- 1.3	123.3	—

¹ Used in calculating the mortgage interest charges component of the Consumer Price Index.

² Percentage change over previous period.

(Source: House Price Indexes: Eight Capital Cities, ABS catalogue number 6416.0)

17

CONSUMER PRICE INDEX, HOBART AND EIGHT CAPITAL CITIES COMBINED^{1, 2}: Original (Base of each index: year 1989-90 = 100.0)

Period	Hobart					
	Food	Clothing	Housing	Household equipment and operation	Transportation	Tobacco and alcohol
1994						
September	113.9	106.6	94.8	112.8	113.9	137.2
December	113.3	105.3	97.6	113.9	115.0	139.1
1995						
March	115.4	105.0	102.7	114.9	115.1	140.3
June	116.1	106.1	104.5	115.4	117.2	143.1
September	117.3	105.9	106.0	116.5	119.4	144.3
December	117.1	105.6	106.5	117.5	120.1	145.9
1996						
March	118.1	106.3	107.2	117.8	119.0	150.3
June	118.4	106.0	107.6	118.5	119.8	153.3
September	120.0	105.9	107.4	119.1	119.7	153.7
December	120.6	105.6	104.8	119.4	121.8	152.7
1997						
March	120.7	105.7	101.9	120.1	122.8	153.1

Period	Hobart				Weighted average of eight capital cities	
	Health and personal care	Recreation and education	Index, all groups	% change over previous period, all groups	Index	% change over previous period
1994						
September	138.7	111.7	113.3	+ 0.8	111.9	+ 0.6
December	138.7	113.0	114.2	+ 0.8	112.8	+ 0.8
1995						
March	140.4	115.4	116.1	+ 1.7	114.7	+ 1.7
June	141.0	114.0	117.1	+ 0.9	116.2	+ 1.3
September	146.7	113.3	118.4	+ 1.1	117.6	+ 1.2
December	146.9	115.8	119.2	+ 0.7	118.5	+ 0.8
1996						
March	149.7	117.1	120.1	+ 0.8	119.0	+ 0.4
June	150.5	116.0	120.6	+ 0.4	119.8	+ 0.7
September	154.1	115.1	121.1	+ 0.4	120.1	+ 0.3
December	154.8	116.8	121.3	+ 0.2	120.3	+ 0.2
1997						
March	159.4	120.5	121.9	+0.5	120.5	+0.2

¹ Further information on construction of CPI indexes is contained in the bulletin *The Australian Consumer Price Index Concepts, Sources and Methods* (Catalogue No. 6461.0).

² The CPI is now published on a reference base of 1989-90 = 100.0.
(Source: *Consumer Price Index*, ABS catalogue number 6401.0.)

PRICE INDEX OF MATERIALS USED IN BUILDING OTHER THAN HOUSE BUILDING, HOBART: **Original**
(Base year: 1989-90 = 100.0)

Index numbers for selected major building materials

Period	Structural timber	Clay bricks	Ready mixed concrete	Precast concrete products	Steel decking, cladding etc.	Structural steel
1996						
January	120.1	123.3	116.9	130.4	111.0	121.9
February	116.9	123.3	115.9	128.4	112.1	121.9
March	116.9	123.7	113.2	128.4	112.3	121.9
April	116.9	123.7	113.2	128.4	112.3	122.7
May	114.4	123.7	112.9	128.4	112.3	122.7
June	113.8	124.5	112.1	128.4	112.3	123.7
July	114.5	124.5	114.2	132.6	112.3	125.2
August	112.7	124.5	115.5	132.6	112.3	126.0
September	112.7	124.5	114.7	132.6	112.3	124.7
October	110.6	124.5	115.8	132.6	112.3	124.7
November	110.3	125.6	115.8	132.6	112.2	126.5
December	108.9	125.6	116.3	132.6	112.2	126.7
1997						
January p	108.9	125.7	116.3	132.6	112.2	126.7
February p	108.9	125.7	116.6	132.6	118.6	126.7
March p	109.8	125.7	117.3	131.3	118.6	126.7

Index numbers for selected major building materials

Period	Reinforcing steel bar, fabric and mesh	Aluminium windows	Fabricated steel products	Builders' hardware	Sand & aggregate	Paint & other coatings	Non-ferrous pipes & fittings
1996							
January	109.2	104.5	108.3	118.3	133.1	121.5	169.1
February	109.2	104.5	108.1	117.7	133.1	121.5	169.4
March	109.2	104.7	108.3	117.7	133.1	121.5	169.4
April	109.2	104.4	111.5	117.3	133.1	118.1	172.8
May	109.2	104.4	111.5	116.0	133.1	120.6	174.5
June	109.2	104.4	111.9	116.1	133.1	124.5	174.5
July	109.2	104.4	111.9	115.4	133.1	126.1	168.7
August	110.7	104.4	112.4	118.9	133.1	126.1	167.9
September	110.8	104.4	113.6	119.0	133.1	126.7	167.9
October	110.9	105.5	113.6	119.1	133.1	126.7	160.8
November	110.9	105.5	113.4	119.1	133.1	127.0	160.9
December	110.9	105.5	113.4	118.2	133.1	128.2	162.4
1997							
January p	110.9	106.8	113.4	118.2	135.0	127.8	162.4
February p	111.0	106.8	113.4	118.0	134.2	127.3	163.1
March p	110.9	106.8	113.5	115.1	134.2	127.2	166.9

(Source: Price Index of Materials Used in Other than House Building, ABS catalogue number 6407.0.)

continued

PRICE INDEX OF MATERIALS USED IN BUILDING OTHER THAN HOUSE BUILDING, HOBART: **Original**—continued
(Base year: 1989-90 = 100.0)

Period	All electrical materials		All mechanical services		All plumbing materials																																																																																															
	Index	% change over previous period	Index	% change over previous period	Index	% change over previous period																																																																																														
1996																																																																																																				
January	117.8	-0.6	114.8	—	127.5	—																																																																																														
February	117.8	—	115.4	+0.5	127.6	+0.1																																																																																														
March	118.6	+0.7	115.7	+0.3	127.6	—																																																																																														
April	118.3	-0.3	116.1	+0.3	126.6	-0.8																																																																																														
May	119.6	+1.1	116.1	—	127.1	+0.4																																																																																														
June	119.5	-0.1	116.5	+0.3	127.3	+0.2																																																																																														
July	119.5	—	116.3	-0.2	127.0	-0.2																																																																																														
August	113.7	-4.9	117.4	+0.9	126.0	-0.8																																																																																														
September	113.9	+0.2	117.6	+0.2	126.0	—																																																																																														
October	118.3	+3.9	117.3	-0.3	120.4	-4.4																																																																																														
November	118.3	—	116.5	-0.7	120.7	+0.2																																																																																														
December	118.3	—	116.5	—	121.2	+0.4																																																																																														
1997																																																																																																				
January p	118.4	+0.1	116.6	+0.1	120.8	-0.3																																																																																														
February p	118.4	—	116.6	—	121.0	+0.2																																																																																														
March p	117.6	-0.7	117.1	+0.4	122.3	+1.1																																																																																														
<table border="1" style="width: 100%; border-collapse: collapse;"> <thead> <tr> <th rowspan="2">Period</th> <th colspan="2">All groups excluding electrical materials and mechanical services</th> <th colspan="2">All groups</th> </tr> <tr> <th>Index</th> <th>% change over previous period</th> <th>Index</th> <th>% change over previous period</th> </tr> </thead> <tbody> <tr> <td colspan="5">1996</td> </tr> <tr> <td>January</td> <td>115.9</td> <td>+0.3</td> <td>115.3</td> <td>+0.2</td> </tr> <tr> <td>February</td> <td>115.6</td> <td>-0.3</td> <td>115.2</td> <td>-0.1</td> </tr> <tr> <td>March</td> <td>115.3</td> <td>-0.3</td> <td>115.1</td> <td>-0.1</td> </tr> <tr> <td>April</td> <td>115.2</td> <td>-0.1</td> <td>115.1</td> <td>—</td> </tr> <tr> <td>May</td> <td>115.3</td> <td>+0.1</td> <td>115.2</td> <td>+0.1</td> </tr> <tr> <td>June</td> <td>115.3</td> <td>—</td> <td>115.3</td> <td>+0.1</td> </tr> <tr> <td>July</td> <td>116.1</td> <td>+0.7</td> <td>115.8</td> <td>+0.4</td> </tr> <tr> <td>August</td> <td>116.5</td> <td>+0.3</td> <td>115.9</td> <td>+0.1</td> </tr> <tr> <td>September</td> <td>116.3</td> <td>-0.2</td> <td>115.8</td> <td>-0.1</td> </tr> <tr> <td>October</td> <td>116.2</td> <td>-0.1</td> <td>116.0</td> <td>+0.2</td> </tr> <tr> <td>November</td> <td>116.6</td> <td>+0.3</td> <td>116.1</td> <td>+0.1</td> </tr> <tr> <td>December</td> <td>116.7</td> <td>+0.1</td> <td>116.2</td> <td>+0.1</td> </tr> <tr> <td colspan="5">1997</td> </tr> <tr> <td>January p</td> <td>116.8</td> <td>+0.1</td> <td>116.3</td> <td>+0.1</td> </tr> <tr> <td>February p</td> <td>117.1</td> <td>+0.3</td> <td>116.5</td> <td>+0.2</td> </tr> <tr> <td>March p</td> <td>117.1</td> <td>—</td> <td>116.6</td> <td>+0.1</td> </tr> </tbody> </table>							Period	All groups excluding electrical materials and mechanical services		All groups		Index	% change over previous period	Index	% change over previous period	1996					January	115.9	+0.3	115.3	+0.2	February	115.6	-0.3	115.2	-0.1	March	115.3	-0.3	115.1	-0.1	April	115.2	-0.1	115.1	—	May	115.3	+0.1	115.2	+0.1	June	115.3	—	115.3	+0.1	July	116.1	+0.7	115.8	+0.4	August	116.5	+0.3	115.9	+0.1	September	116.3	-0.2	115.8	-0.1	October	116.2	-0.1	116.0	+0.2	November	116.6	+0.3	116.1	+0.1	December	116.7	+0.1	116.2	+0.1	1997					January p	116.8	+0.1	116.3	+0.1	February p	117.1	+0.3	116.5	+0.2	March p	117.1	—	116.6	+0.1
Period	All groups excluding electrical materials and mechanical services		All groups																																																																																																	
	Index	% change over previous period	Index	% change over previous period																																																																																																
1996																																																																																																				
January	115.9	+0.3	115.3	+0.2																																																																																																
February	115.6	-0.3	115.2	-0.1																																																																																																
March	115.3	-0.3	115.1	-0.1																																																																																																
April	115.2	-0.1	115.1	—																																																																																																
May	115.3	+0.1	115.2	+0.1																																																																																																
June	115.3	—	115.3	+0.1																																																																																																
July	116.1	+0.7	115.8	+0.4																																																																																																
August	116.5	+0.3	115.9	+0.1																																																																																																
September	116.3	-0.2	115.8	-0.1																																																																																																
October	116.2	-0.1	116.0	+0.2																																																																																																
November	116.6	+0.3	116.1	+0.1																																																																																																
December	116.7	+0.1	116.2	+0.1																																																																																																
1997																																																																																																				
January p	116.8	+0.1	116.3	+0.1																																																																																																
February p	117.1	+0.3	116.5	+0.2																																																																																																
March p	117.1	—	116.6	+0.1																																																																																																

(Source: Price Index of Materials Used in Other than House Building, ABS catalogue number 6407.0.)

19

PRODUCTION OF SELECTED COMMODITIES: **Original**

Year or month	Dairy products ¹			Staff-hours worked ²	
	Whole milk ³	Factory butter ⁴	Factory cheese	Textile manufacturing ⁵	Vegetable preserving
	million litres	tonnes	tonnes	'000	'000
1993-94	447.3	7 846	22 461	1 575	2 002
1994-95	436.5	8 105	20 529	1 527	1 838
1995-96	513.8	9 589	25 371	1 443	1 784
1994					
February	43.3	897	1 810	133	158
1996					
February	48.7	1 175	1 932	116	163
1996					
December	70.9	1 166	3 872	104	124
1997					
January	56.1	1 181	2 481	71	100
February	48.2	1 090	2 159	113	155
Year or month	Newsprint ⁶	Refined zinc	Metal, refin. index ⁷	Electricity	Gas
	'000 tonnes	'000 tonnes		million kW.h	'000 MJ
1993-94	208.9	193.8	105.5	8 855	55 767
1994-95	222.7	189.8	98.3	8 688	51 933
1995-96	242.9	207.8	104.7	9 100	41 035
1994					
February	16.6	12.3	94.3	654	3 079
1996					
February	19.9	17.4	99.3	668	2 265
1996					
December	18.2	17.6	120.7	760	500
1997					
January	20.0	16.3	116.9	741	—
February	16.8	14.6	106.0	670	—

¹ Source: Australian Dairy Corporation.
² Changing productivity per staff-hour makes these indicators unsatisfactory for long-term comparisons.
³ Includes the whole milk equivalent of farm cream intake.
⁴ Includes butter equivalent of butter oil.
⁵ Includes spinning, weaving and carpet making. Reported by establishments which manufacture textiles only, or manufacture clothing and textiles in the one plant.
⁶ Excludes production of directory newsprint and high grade specialty paper.
⁷ Metallurgical refining index (Base: 1979-80 = 100.0) Output from selected establishments covering the smelting and refining of ferro-alloys, zinc and aluminium. The weighting pattern is based on the establishments' value added as derived from the 1979-80 Manufacturing Census. For multi-product establishments, value added was apportioned to products on the basis of gross receipts from each product.
(Sources: ABS unpublished data.)

20

LIVESTOCK SLAUGHTERING: **Original**

Year or month	Cattle					
	Bulls, bullocks and steers	Cows and heifers	Calves	Sheep	Lambs	Pigs
	'000	'000	'000	'000	'000	'000
1993-94	101.8	85.2	23.2	526.1	437.8	95.8
1994-95	111.2	96.7	28.8	569.3	477.2	92.9
1995-96	95.4	88.9	41.4	349.7	393.3	86.5
1995						
March	13.0	12.0	0.4	68.6	48.3	8.8
1996						
March	8.6	9.1	0.3	35.5	39.3	7.6
April	6.3	6.7	0.9	28.4	29.6	6.4
May	10.4	10.8	1.4	37.0	37.9	7.7
June	8.7	9.2	0.7	27.7	31.8	7.0
July	7.3	5.8	1.8	21.6	25.3	7.2
August	6.2	4.6	13.4	13.2	21.2	6.3
September	6.4	5.2	16.8	14.0	25.4	6.3
October	7.6	6.4	6.1	19.8	25.2	5.9
November	9.4	8.0	0.6	32.3	27.1	5.7
December	12.3	8.9	0.2	42.0	28.2	7.0
1997						
January	12.8	8.1	0.1	47.5	42.8	6.8
February	10.6	8.8	0.1	47.4	35.6	6.2
March	10.1	8.1	0.4	43.5	35.0	6.6

(Source: *Livestock Products, Australia*, ABS catalogue number 7215.0.)

21

LIVESTOCK SLAUGHTERING: **Seasonally adjusted and trend**

Month	Seasonally adjusted			Trend		
	Cattle and calves	Sheep and lambs	Pigs	Cattle and calves	Sheep and lambs	Pigs
	'000	'000	'000	'000	'000	'000
1995						
March	25.2	84.4	7.9	22.7	81.7	7.8
1996						
March	18.3	58.3	7.4	18.6	60.4	7.2
April	16.0	56.0	7.0	18.6	59.5	7.1
May	21.5	63.3	6.8	19.0	59.1	7.0
June	21.0	57.1	6.6	16.5	58.6	6.9
July	18.1	65.0	7.3	20.1	57.7	6.7
August	19.8	52.4	6.5	20.5	56.7	6.6
September	23.1	55.8	6.8	20.8	56.5	6.4
October	19.7	53.8	6.0	21.1	57.9	6.3
November	20.4	60.0	5.6	21.5	60.6	6.3
December	23.7	62.8	6.0	21.9	63.7	6.4
1997						
January	21.6	73.4	7.5	22.2	66.4	6.6
February	22.4	71.4	7.2	22.4	68.4	6.9
March	22.5	62.5	6.7	22.5	69.5	7.0

(Source: ABS unpublished data)

22

MEAT PRODUCTION¹: Original

Year or month		Beef	Veal	Mutton	Lamb	Pigmeat ²	Total
		tonnes	tonnes	tonnes	tonnes	tonnes	tonnes
1993-94		47 458	515	9 992	7 047	6 019	71 031
1994-95		49 907	977	11 230	8 412	5 982	76 509
1995-96	r	45 377	875	7 414	7 407	5 634	66 707
1995							
March	p	5 931	18	1 311	808	572	8 641
1996							
March	r	4 208	9	753	741	496	6 207
April	r	3 066	22	593	557	423	4 661
May	r	5 246	34	779	715	502	7 276
June	r	4 461	18	578	600	456	6 113
July	r	3 271	39	448	474	469	4 702
August	r	2 638	272	270	398	411	3 990
September	r	2 878	339	286	478	410	4 392
October	r	3 434	125	409	474	386	4 827
November	r	4 262	15	700	510	368	5 855
December	r	5 659	7	928	528	456	7 479
1997							
January	r	5 434	5	1 020	806	456	7 721
February	r	4 976	6	1 019	670	413	7 083
March	p	4 635	13	927	658	431	6 664

¹ Carcass weight.

² Includes pork used for production of bacon and ham.

(Source: *Livestock Products, Australia*, ABS catalogue number 7215.0.)

23

PRINCIPAL MINERAL CONCENTRATES PRODUCED: Original

Year or quarter	Copper	Iron (pellets)	Lead	Lead-zinc	Tin	Zinc
Year or quarter	'000 tonnes	'000 tonnes	'000 tonnes	'000 tonnes	'000 tonnes	'000 tonnes
1993-94	128.1	1 565.9	93.4	57.5	13.4	316.5
1994-95	59.4	1 483.8	97.4	45.3	14.3	350.6
1995-96	53.5	1 681.3	106.3	38.6	16.0	361.5
1995						
September	4.5	463.0	28.4	11.2	4.1	93.6
December	7.8	416.0	29.7	6.8	4.1	98.1
1996						
March	19.8	326.9	24.1	11.4	3.5	84.8
June	21.5	475.4	24.1	9.2	4.3	85.0
September	26.0	439.3	30.6	10.3	3.9	88.6
December	25.6	366.7	24.9	11.0	4.0	89.5

(Source: Tasmania—Development and Resources)

24

SAWMILLS AND PLYWOOD MILLS, LOGS DELIVERED AND TIMBER PRODUCED: **Original**

Year or quarter	Tasmanian-grown logs delivered					Sawn, peeled and sliced timber produced ¹				
	Eucalypts	Hardwoods, excluding eucalypts ²	Plantation ³ softwoods	Native softwoods ⁴	Total	Eucalypts	Hardwoods, excluding eucalypts ²	Plantation ³ softwoods	Native softwoods ⁴	Total
1993-94	584.3	15.3	299.2	1.5	900.4	203.5	3.1	141.0	0.5	348.0
1994-95	653.1	12.6	304.9	2.8	973.4	212.5	4.3	142.7	0.6	360.1
1995-96	602.8	13.0	343.7	1.4	960.9	192.4	4.4	152.0	0.5	349.3
1994										
December	163.0	3.7	68.8	0.3	235.8	55.2	1.0	36.1	0.2	92.5
1995										
March	132.3	3.0	82.5	1.1	218.9	44.5	1.0	37.0	0.1	82.6
June	187.6	2.1	77.4	0.7	267.8	53.4	1.1	34.6	0.1	89.2
September	184.3	1.8	79.9	0.2	266.2	55.4	1.3	36.0	0.1	92.8
December	139.1	1.5	70.2	0.2	211.0	49.0	1.0	36.0	0.2	86.2
1996										
March	136.6	6.7	98.1	0.3	241.7	41.5	0.9	41.2	0.1	83.7
June	142.9	3.0	95.5	0.6	242.0	46.5	1.2	38.8	0.1	86.6
September	134.4	2.4	97.3	—	234.1	47.3	1.1	43.0	0.1	91.4
December	111.8	3.7	83.3	0.5	199.3	40.1	0.9	41.2	0.1	82.3

¹ Includes plywood, veneer and sliced timber production converted to an equivalent cubic measurement.

² Includes blackwood, myrtle, sassafras etc.

³ Radiata pine.

⁴ Includes Huon pine, celery top pine and King William pine.

(Source: ABS unpublished data.)

25

CHIPPING AND GRINDING OF WOOD¹: **Original**

Year or quarter	Producing locations ²	Materials used ³		
		Logs delivered ⁴	Sawmill offcuts	Chipped and ground wood production
	no.	'000 m ³	'000 m ³	('000 tonnes green weight)
1993-94	30	3 448.8	339.8	3 726.1
1994-95	31	4 064.1	394.2	4 343.1
1995-96	31	3 510.0	457.9	3 820.1
1994				
December	31	1 065.8	92.0	1 115.4
1995				
March	31	1 090.6	95.7	1 177.1
June	31	967.9	120.1	1 059.3
September	32	935.6	118.2	1 044.1
December	31	932.1	104.6	939.9
1996				
March	32	842.6	109.8	958.0
June	31	799.6	125.3	878.1
September	30	767.5	133.5	870.9
December	30	805.1	117.9	908.4

¹ Both hardwoods and softwoods, separate details are not available.

² Capable of producing at end of year or actually producing during quarter.

³ Data reported by weight, converted to cubic measure by the factor 0.95 m³ per tonne.

⁴ Includes log equivalent of limbwood and billets.

(Source: ABS unpublished data.)

26

LOGS DELIVERED FOR MILLING OR CHIPPING: **Original**

Year or quarter	Sawmilling and plywood milling			Chipping and grinding ¹			Total		
	Crown land ²	Private land	Total	Crown land ²	Private land	Total	Crown land ²	Private land	Total
	'000 m ³	'000 m ³	'000 m ³	'000 m ³	'000 m ³	'000 m ³	'000 m ³	'000 m ³	'000 m ³
1993-94	696.5	203.9	900.4	1 697.0	1 751.8	3 448.8	2 393.5	1 955.7	4 349.2
1994-95	780.3	193.2	973.4	1 966.8	2 097.3	4 064.1	2 747.1	2 290.4	5 037.6
1995-96	773.5	187.4	960.9	1 579.6	1 930.4	3 510.0	2 353.1	2 117.8	4 470.9
1994									
December	180.6	55.2	235.8	467.9	597.8	1 065.8	648.5	653.0	1 301.6
1995									
March	184.7	34.2	218.9	480.3	610.3	1 090.6	665.0	644.5	1 309.5
June	215.2	52.7	267.8	537.6	430.3	967.9	752.8	483.0	1 235.8
September	214.1	52.2	266.2	438.2	497.4	935.6	652.2	549.6	1 201.9
December	165.2	45.8	211.0	388.3	543.8	932.1	553.5	589.6	1 143.1
1996									
March	202.3	39.4	241.7	405.3	437.3	842.6	607.6	476.7	1 084.3
June	191.9	50.1	242.0	347.9	451.8	799.6	539.7	501.8	1 041.6
September	194.2	39.9	234.1	403.5	364.0	767.5	597.8	403.9	1 001.7
December	162.5	36.8	199.3	411.0	394.1	805.1	573.4	430.9	1 004.3

¹ Logs used are generally below sawmilling standard; includes log equivalent of limbwood and billets.

² Comprises all areas (including concession areas) from which royalties are payable to Forestry Tasmania. (Source: ABS unpublished data.)

27

BUILDING APPROVALS: Original

Year or month	New residential building			Value					
	Houses no.	Other ¹ no.	Con- versions etc. no.	Total dwelling units no.	New dwelling units \$'000	Alterations and additions ² to residential building \$'000	Non-residential building ³		Total of all building \$'000
							Private \$'000	Total \$'000	
1993-94	3 113	1 034	11	4 158	301 963	39 522	81 251	145 922	487 407
1994-95	2 576	596	14	3 176	244 623	39 963	117 984	161 567	446 152
1995-96	1 938	601	7	2 546	217 445	36 890	119 849	216 752	471 086
1994									
March	266	64	3	333	25 488	4 094	3 135	6 737	36 319
1996									
March	138	27	—	165	13 759	2 846	9 481	12 509	29 113
1996									
December	130	23	—	153	12 943	2 371	3 796	4 396	19 710
1997									
January	118	25	10	153	12 241	3 513	9 258	10 878	26 632
February	129	24	—	153	13 702	3 253	8 862	12 507	29 461
March	125	—	—	125	10 922	3 719	7 861	10 140	24 781

¹ New individual dwelling units (e.g. flats, home units and villa units).

² Valued at \$10,000 and over.

³ Comprises non-residential building (new plus alterations and additions) valued at \$50,000 and over.

(Source: *Building Approvals, Tasmania*, ABS catalogue number 8731.6.)

28

SECURED HOUSING COMMITMENTS¹: Original, seasonally adjusted and trend

Month	Total number of dwellings ²			Total value of commitments		
	Original	Seasonally adjusted	Trend	Original	Seasonally adjusted	Trend
	no.	no.	no.	\$'000	\$'000	\$'000
1996						
January	840	951	933	59.1	63.0	63.8
February	911	887	904	63.3	62.7	61.6
March	988	884	877	69.4	61.0	59.9
April	849	888	859	58.9	61.3	59.4
May	942	825	857	64.7	55.6	60.9
June	841	830	872	58.3	61.0	64.0
July	1 032	1 012	1 069	66.1	64.7	68.0
August	1 163	1 175	1 088	77.2	79.6	71.2
September	1 067	1 098	1 081	68.8	70.4	72.0
October	1 117	1 155	1 042	75.9	80.8	70.0
November	909	924	976	60.7	61.5	65.8
December	787	845	904	54.4	57.6	61.2
1997						
January	742	810	841	49.5	51.6	57.6
February	778	793	791	56.1	56.9	54.9
March	814	799	758	59.2	57.9	53.5

¹ Commitment is a firm offer of housing finance. It either has been, or is normally expected to be, accepted. Includes commitments to provide housing finance to employees and commitments accepted and cancelled in the same month. Excludes alterations and additions. Includes refinancing.

² Includes new dwellings, established dwellings and refinancing. Excludes alterations and additions.
(Source: *Housing Finance for Owner Occupation, Australia*, ABS catalogue 5609.0.)

29

BANKING STATISTICS¹: Original

Month	Deposits				
	Current bearing interest	Current – not bearing interest	Fixed	Investment savings accounts	Statement savings accounts
	\$m	\$m	\$m	\$m	\$m
1996					
March	690	271	1 657	550	160
April	689	270	1 693	547	160
May	674	262	1 697	541	158
June	659	260	1 707	541	158
July	687	253	1 737	540	161
August	692	249	1 758	543	163
September	690	240	1 768	552	165
October	699	238	1 787	559	168
November	692	237	1 791	560	169
December	699	244	1 771	570	188
1997					
January	662	246	1 763	583	235
February	695	241	1 764	605	229
March	692	252	1 780	606	231

Month	Deposits			
	Passbook/School savings accounts	Other	Total	Loans ²
	\$m	\$m	\$m	\$m
1996				
March	171	128	3 626	4 450
April	168	130	3 657	4 471
May	164	127	3 623	4 511
June	161	128	3 615	4 529
July	156	127	3 660	4 532
August	153	127	3 685	4 541
September	151	129	3 694	4 520
October	147	129	3 728	4 545
November	140	132	3 722	4 513
December	134	133	3 739	4 533
1997				
January	127	129	3 745	4 466
February	123	103	3 759	4 493
March	122	103	3 786	4 694

¹ Details are the averages of weekly figures for each month. The figures are derived from returns submitted by banks authorised under the *Banking Act* together with similar returns voluntarily submitted by the State banks; they exclude the Reserve Bank.

² Excludes non-resident loans.

(Source: Reserve Bank of Australia.)

30

PRIVATE NEW CAPITAL EXPENDITURE BY TYPE OF ASSET¹: Original

Year or quarter	New buildings and structures	Equipment, plant, and machinery	Total
	\$m	\$m	\$m
1993–94	100	341	441
1994–95	133	503	636
1995–96	178	394	571
1995			
December	46	91	137
1996			
March	45	94	139
June	37	116	153
September	33	114	146
December	34	153	187

¹ Estimates based on a sample survey and therefore subject to sampling variability. Covers selected industries only—mining, manufacturing, finance, property and other selected industries.

(Source: *State Estimates of Private New Capital Expenditure*, ABS catalogue number 5646.0.)

31

PASSENGER ARRIVALS AND DEPARTURES, TASMANIA¹: Original

Period	By air		By sea	Total	Total departures ²	Cruise ships	
	Interstate arrivals	International arrivals				Arrivals	Departures
1993	694 244	5 144	115 381	814 769	814 835	2 033	2 033
1994	745 508	4 166	128 644	878 318	880 936	6 592	6 592
1995	811 784	3 982	116 869	932 635	931 278	6 199	6 199
1996	829 654	2 999	115 486	948 139	960 569	5 286	5 286
1995							
December	84 067	452	11 972	96 491	80 306	1 590	1 590
1996							
October	68 956	352	10 073	79 381	79 774	—	—
November	68 037	431	11 341	79 809	78 803	—	—
December	79 002	295	12 703	92 000	80 667	850	850

¹ The following persons are not included in these statistics: passengers under three years of age accompanied by an adult; passengers travelling on chartered flights with minor carriers; passengers travelling on private or VIP flights; and passengers from or departing for overseas other than direct flights to New Zealand.

² The proportion of departing passengers who were visitors was shown to be about 58% in the 1981 Tasmanian Visitor Survey, 55% in the 1984 Tasmanian Visitor Survey, 53% in the 1986 Tasmanian Visitor Survey, 65% in the 1990 Tasmanian Visitor Survey, 60% in the 1994 survey, and 58% in the 1995 Tasmanian Visitor Survey.

(Source: Tourism Tasmania.)

32

TOTAL PASSENGER ARRIVALS BY AIR AND SEA, TASMANIA: Original, seasonally adjusted and trend

Period	Original	Seasonally adjusted ¹	Trend
1995			
December	96 491	77 749	77 754
1996			
October	79 381	81 475	80 076
November	79 809	81 484	78 838
December	92 000	73 496	77 759

¹ There is an annual recalculation of seasonal adjustment factors to include the most recent year's arrivals. This occurs at the end of each financial year and may cause revisions to previously published seasonally adjusted and trend figures. A full time series of seasonally adjusted and trend series from January 1971 is available on request, telephone (03) 6220 5870.

(Source: Tourism Tasmania. ABS unpublished data.)

HOTELS, MOTELS, ETC. WITH FACILITIES						
Period	Original		Room nights		Original	
	Establishments ¹ no.	Guest rooms ¹ no.	Seasonally adjusted ² no.	Trend estimates ² no.	Room occupancy rate %	Takings from accommodation \$'000
December quarter						
1994	177	5 354	n.a.	n.a.	55.4	20 159
1995	180	5 503			57.0	22 090
1996	187	5 604			54.8	22 556
1994						
October	n.a.	n.a.	87 143	88 037	55.0	6 532
November	n.a.	n.a.	85 236	87 545	60.5	7 071
December	177	5 354	88 136	87 108	50.9	6 557
1995						
October	n.a.	n.a.	88 438	91 208	55.9	7 269
November	n.a.	n.a.	93 421	91 108	63.4	7 850
December	180	5 503	91 340	90 882	52.1	6 971
1996						
October	n.a.	n.a.	89 296	87 924	55.0	7 577
November	n.a.	n.a.	92 164	88 306	60.0	7 916
December	187	5 604	86 152	88 457	49.2	7 063
HOLIDAY UNITS						
Period	Original		Unit nights		Original	
	Establishments ¹ no.	Units ¹ no.	Seasonally adjusted ² no.	Trend estimates ² no.	Unit occupancy rate %	Takings from accommodation \$'000
December quarter						
1994	52	816	n.a.	n.a.	57.0	3 036
1995	54	830			52.8	2 958
1996	57	861			52.9	2 990
1994						
October	n.a.	n.a.	13 821	13 544	58.4	1 017
November	n.a.	n.a.	13 932	13 743	59.9	999
December	52	816	13 433	14 000	52.8	1 020
1995						
October	n.a.	n.a.	12 224	12 641	50.7	928
November	n.a.	n.a.	13 331	12 773	56.4	1 011
December	54	830	13 329	12 820	51.5	1 019
1996						
October	n.a.	n.a.	12 999	12 835	52.0	953
November	n.a.	n.a.	13 759	13 250	56.2	1 020
December	57	861	13 628	13 571	50.7	1 017
CARAVAN PARKS						
Period	Original		Site nights		Original	
	Establishments ¹ no.	Sites and cabins ¹ no.	Seasonally adjusted ² no.	Trend estimates ² no.	Site occupancy rate %	Takings from accommodation \$'000
December quarter						
1994	75	6 953	n.a.	n.a.	30.4	1 818
1995	72	6 440			33.2	1 923
1996	73	6 500			33.1	1 983
1994						
October	n.a.	n.a.	66 032	65 758	27.9	525
November	n.a.	n.a.	66 797	65 634	29.8	589
December	75	6 953	65 194	65 284	33.6	704
1995						
October	n.a.	n.a.	64 974	65 396	30.0	583
November	n.a.	n.a.	65 367	65 686	32.4	616
December	72	6 440	66 831	65 882	37.2	724
1996						
October	n.a.	n.a.	66 373	67 199	30.8	596
November	n.a.	n.a.	67 509	66 920	32.3	644
December	73	6 500	66 060	66 500	36.2	742

¹ At end of quarter.² Seasonally adjusted and trend estimates are revised annually because of yearly seasonal re-analysis.(Source: *Tourist Accommodation, Tasmania*, ABS catalogue number 8635.6.)

34

REGISTRATIONS OF NEW MOTOR VEHICLES¹: Original

Year or month	Passenger vehicles	Other vehicles ²	Total (excl. motor cycles)	Vehicles registered by vehicle rental businesses ³	Motor cycles
	no.	no.	no.	no.	no.
1994	10 543	2 837	13 380	1 708	376
1995	10 919	2 874	13 793	1 952	393
1996	11 445	2 726	14 171	2 384	462
1995					
March	879	218	1 097	1	57
1996					
March	764	197	961	3	33
April	659	159	818	—	30
May	916	286	1 202	3	44
June	744	250	994	9	32
July	1 099	242	1 341	232	26
August	1 040	296	1 336	216	52
September	1 171	177	1 348	448	38
October	1 042	265	1 307	213	35
November	1 072	195	1 267	370	50
December	1 491	246	1 737	823	48
1997					
January	756	179	935	4	49
February	746	152	898	3	34
March	738	220	958	3	39

¹ Includes State and Commonwealth Government-owned motor vehicles other than those belonging to the defence services. Excludes tractors, plant and equipment, caravans and trailers.

² Comprises utilities, panel vans, rigid and articulated trucks and other truck-type vehicles (i.e. motor vehicles designed for purposes other than freight carrying, e.g. campervans, tow trucks, ambulances and hearses) and buses.

³ These figures are included in previous columns.

(Source: Motor Vehicle Registrations Australia, ABS catalogue number 9301.0. ABS unpublished data.)

35

TURNOVER OF RETAIL ESTABLISHMENTS AT CURRENT PRICES¹: Original and trend

Period	Original		Trend estimates	
	\$m	%	\$m	%
1995				
March	232.7		233.9	1.2
1996				
March	241.3		247.2	5.7
April	237.8		247.3	5.0
May	250.3		246.7	4.3
June	230.6		245.5	3.6
July	229.1		244.3	3.1
August	238.2		243.7	2.8
September	222.5		243.8	2.6
October	249.1		244.7	2.4
November	257.9		246.2	2.3
December	324.3		247.5	2.0
1997				
January	247.4		248.5	1.6
February	224.7		249.3	1.3
March	242.2		250.4	1.3

¹ Survey has been re-designed—see Information Paper (8511.0).

(Source: Retail Trade, Australia, ABS catalogue number 8501.0.)

	NSW	Vic.	Qld	SA	WA	Tas.	Aust. ¹
Population							
Estimated resident population, September 1996 ('000) p	6 207.9	4 552.0	3 373.2	1 480.2	1 771.0	473.4	18 348.7
Proportion of Australian population, September 1996 (%) p	33.8	24.8	18.4	8.1	9.7	2.6	100.0
Population growth rate, 12 months to September 1996 (%) p	1.2	0.9	2.3	0.4	1.8	—	1.3
Labour Force							
Employment growth, 12 months to April 1997 (trend series) (%)							
Males	1.2	0.5	- 0.7	0.1	3.0	- 3.0	0.6
Females	1.3	2.0	4.2	1.5	1.9	- 3.3	2.0
Persons	1.2	1.2	1.4	0.7	2.5	- 3.2	1.2
Unemployment rate (trend series), April 1997 (%)	8.1	9.1	9.8	9.5	7.5	10.9	8.7
Unemployment growth, 12 months to April 1997 (trend series) (%)	3.2	6.1	8.4	2.0	- 0.1	1.7	3.9
Participation rate (trend series), April 1997 (%)	62.3	63.6	64.3	62.0	66.0	59.2	63.5
Average weekly overtime worked per employee, February 1997 (hours)	1.1	1.2	1.0	1.0	1.1	0.9	1.1
Job vacancy rate, February 1997 (%)	1.0	0.8	1.0	0.7	1.1	1.0	0.9
Working days lost through industrial disputes, 12 months to January 1997 (days per '000 employees)	162	113	161	83	72	73	131
Wages and Prices							
Average weekly total earnings, full-time adult employees (trend series) November 1996 (\$)							
Males	826.7	779.6	726.5	725.9	802.4	722.3	786.1
Females	658.2	619.6	589.5	587.8	602.6	580.8	627.6
Persons	763.8	724.2	678.8	681.7	730.1	674.6	729.0
Average weekly total earnings, full-time adult employees, growth rate, 12 months to November 1996 (%)	3.6	4.1	5.0	4.3	2.2	4.5	4.0
Consumer price index, all groups, annual growth to March quarter 1997 (%) ²	1.3	1.5	1.6	0.8	0.9	1.5	1.3
Building							
% change in the number of new residential dwelling units approved in 12 months ended March 1997, over the same period previous year	- 0.6	- 1.6	5.9	- 7.6	- 11.9	- 22.6	- 1.6
Finance and Retail Trade							
% change in private new capital expenditure, 12 months ended December 1996, over the same period previous year	13.0	31.4	19.9	16.3	- 3.9	- 6.2	16.6
% change in trend estimates turnover of retail establishments, March 1997 (change from corresponding month of the previous year)	1.1	8.2	3.3	1.2	2.6	1.3	3.2
Transport							
% change in number of new motor vehicles (excluding motorcycles) registered 12 months ended March 1997, over the same period previous year	1.9	5.2	1.0	- 2.0	6.5	5.2	2.4
Agriculture							
% change in the number of livestock slaughtered 12 months ended March 1997 over the same period previous year							
Cattle and calves	1.3	5.9	- 6.1	- 13.3	- 1.0	2.7	- 0.7
Sheep and lambs	- 3.3	- 0.5	17.0	- 7.9	18.9	- 8.7	0.1
Tourism							
Room occupancy rates for hotels, motels etc. with facilities, December quarter 1996 (%)	60.9	56.0	62.7	54.9	60.3	54.8	59.9
Australian National and State Accounts							
% change in GSP (GDP), Average 1989-90 Prices Trend Series							
Sept. qtr 1996 to Dec. qtr 1996	0.9	0.7	1.1	0.6	0.6	- 0.5	0.4
Dec. qtr 1995 to Dec. qtr 1996	3.6	2.3	5.0	1.5	4.9	- 0.3	2.7

¹ Australian totals include the ACT and NT.² CPI applies to State capitals.

EXPLANATORY NOTES

INTRODUCTION

1 This publication contains latest figures for a comprehensive range of economic indicators. Statistics shown in this publication are the latest available at the date of preparation and may be subject to revision in subsequent issues. In a number of cases figures appearing in this publication are preliminary and are subject to revision in subsequent issues. Reference should therefore always be made to the latest issue or to the statistical publication on the specific subject.

SEASONAL ADJUSTMENT AND TREND ESTIMATION

2 Seasonal adjustment is a means of removing the estimated effects of normal seasonal variation from the series so that the effects of other influences on the series can be more clearly recognised. Seasonal adjustment does not aim to remove the irregular or non-seasonal influences which may be present in any particular month. This means that month-to-month movements of the seasonally adjusted estimates may not be reliable indicators of trend behaviour.

3 The smoothing of seasonally adjusted series reduces the impact of the irregular components of the seasonally adjusted series and creates trend estimates. These trend estimates are derived by applying a 13-term Henderson-weighted moving average to all months except the last six. The last six monthly trend estimates are obtained by applying surrogates of the Henderson average to the seasonally adjusted series. Trend series are used to analyse the underlying behaviour of the series over time.

4 While this smoothing technique enables estimates to be produced for the latest month, it does result in revisions to the most recent months as additional observations become available. Generally, subsequent revisions become smaller and after 3 months have a negligible impact on the series. Revisions also occur as a result of the annual review of seasonal factors.

5 Users may wish to refer to the ABS Publication *A Guide to Interpreting Time Series – Monitoring 'Trends' – An Overview* (1348.0) for more detailed information on smoothing seasonally adjusted time series data.

RELATED PUBLICATIONS

6 Current publications produced by the ABS are listed in the *Catalogue of Publications and Products* (1101.0). The ABS also issues, on Tuesdays and Fridays, the *Release Advice* (1105.0) which lists publications to be released in the next few days. The *Catalogue* and *Release Advice* are available from any ABS office.

UNPUBLISHED STATISTICS

7 As well as the statistics included in this and related publications, the ABS may have other relevant unpublished data available. Inquiries should be made to Information Inquiries on (03) 6222 5800 or to any ABS office.

EFFECTS OF ROUNDING

8 Some figures have been rounded and discrepancies may occur between totals and sums of the component items.

SYMBOLS AND OTHER USAGES

n.a.	not available
n.y.a.	not yet available
..	not applicable
—	nil or rounded to zero
p	preliminary—figure or series subject to revision
r	figure or series revised since previous issue



For more information . . .

The ABS publishes a wide range of statistics and other information on Australia's economic and social conditions. Details of what is available in various publications and other products can be found in the ABS Catalogue of Publications and Products available from all ABS Offices.

ABS Products and Services

Many standard products are available from ABS bookshops located in each State and Territory. In addition to these products, information tailored to the needs of clients can be obtained on a wide range of media by contacting your nearest ABS Office. The ABS also provides a Subscription Service for standard products and some tailored information services.

National Dial-a-Statistic Line

0055 86 400

Steadycom P/L: premium rate 25c/21.4 secs.

This number gives 24-hour access, 365 days a year, for a range of important economic statistics including the CPI.

Internet

<http://www.statistics.gov.au>

A wide range of ABS information is available via the Internet, with basic statistics available for each State, Territory and Australia. We also have Key National Indicators, ABS product release details and other information of general interest.

Sales and Inquiries

Keylink STAT.INFO/ABS
X.400 (C:Australia,PUB:Telememo,O:ABS,FN:STAT,SN:INFO)
Internet stat.info@abs.telememo.au

National Mail Order Service (06) 252 5249
Subscription Service 1800 02 0608

	Information Inquiries	Bookshop Sales
SYDNEY	(02) 9268 4611	(02) 9268 4620
MELBOURNE	(03) 9615 7755	(03) 9615 7755
BRISBANE	(07) 3222 6351	(07) 3222 6350
PERTH	(09) 360 5140	(09) 360 5307
ADELAIDE	(08) 8237 7100	(08) 8237 7582
CANBERRA	(06) 252 6627	(06) 207 0326
HOBART	(03) 6222 5800	(03) 6222 5800
DARWIN	(08) 8943 2111	(08) 8943 2111



Client Services, ABS, PO Box 10, Belconnen ACT 2616

Produced by the Australian Government Publishing Service
© Commonwealth of Australia 1997



2130360006973

ISSN 1034-1803

Recommended retail price: \$18.00